

**05-1980 [D-0101] Splice - Byte XD-300**

Model: Byte XD-300. Een tafelmanier met een intoetsbedieningspaneeltje van Braziliaanse makelij. Producent: Industria Brasileira. Hoogstwaarschijnlijk heeft Fidelity nooit toestemming gegeven aan Industria Brasileira om het schaakprogramma van de Chess Challenger 7 te kopiëren. Het gaat hier dus om een zuivere roofookopie van de Challenger 7!

We zullen het waarschijnlijk wel nooit te weten komen, maar misschien bevat het zelfs wel een programmaversie van de Chess Challenger Super 7? Ik denk dat alleen nog expert Hans-Peter Ketterling hier nog een antwoord op zou kunnen geven. Laten we hopen dat het ooit nog eens zover komt!



Aus der Sammlung von Alwin Gruber ...



Klon von Chess Challenger (Super?) 7 aus Brasilien.  
Sehr, sehr selten...Weltweit vielleicht noch 20 Exemplaren ...??



Aus der Sammlung von Alwin Gruber ... Nr. 11441 ... !!



Aus der Sammlung von Manfred Vellmer ...



From collector Mike Watters ...



From collector Ismenio Sousa ...

**Ismenio Sousa**  
**The Byte XD-300 has a brother!**

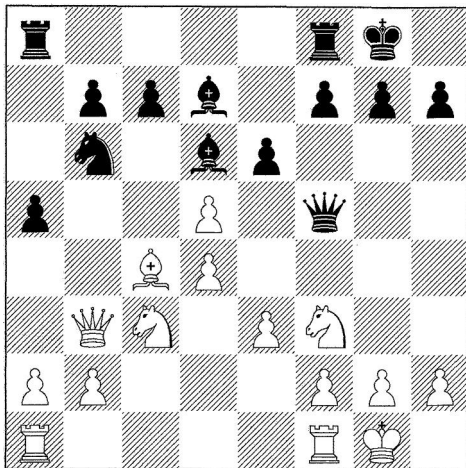
I finally got the two Byte computers to play against each other! Maybe a world's first?  
Here's the game for your enjoyment. I just used the default settings. The newer Byte played with White after a random scientific method of selection was used (i.e., the toss of a coin!).

Date: January 16, 2006  
White-Byte 1 (new)  
Black-Byte 2 (repaired)

- |                  |               |
|------------------|---------------|
| <b>1. d2-d4</b>  | <b>d7-d5</b>  |
| <b>2. c2-c4</b>  | <b>e7-e6</b>  |
| <b>3. Nb1-c3</b> | <b>Ng8-f6</b> |
| <b>4. Bc1-g5</b> | <b>Nb8-d7</b> |
| <b>5. Qd1-a4</b> | <b>Bf8-d6</b> |

First time I saw the display flashing for a few seconds! Both computers!

- |                   |               |
|-------------------|---------------|
| <b>6. Bg5xf6</b>  | <b>Qd8xf6</b> |
| <b>7. c4xd5</b>   | <b>0-0</b>    |
| <b>8. Ng1-f3</b>  | <b>Nd7-b6</b> |
| <b>9. Qa4-b5</b>  | <b>Bc8-d7</b> |
| <b>10. Qb5-b3</b> | <b>Qf6-f4</b> |
| <b>11. e2-e3</b>  | <b>Qf4-f5</b> |
| <b>12. Lf1-c4</b> | <b>a7-a5</b>  |
| <b>13. 0-0</b>    |               |



- 13. ... e6xd5**

(13 ... a4 wins a piece but that is 3 ply deep. 😊)

- |                   |               |
|-------------------|---------------|
| <b>14. Nc3xd5</b> | <b>Nb6xc4</b> |
| <b>15. Qb3xc4</b> | <b>c7-c6</b>  |
| <b>16. Nd5-c3</b> | <b>Rf8-e8</b> |

17. e3-e4 Qf5-e6  
18. d4-d5 c6xd5  
19. Qc4xd5 Qe6xd5  
20. e4xd5 Ra8-c8

Black responded fairly quickly here.

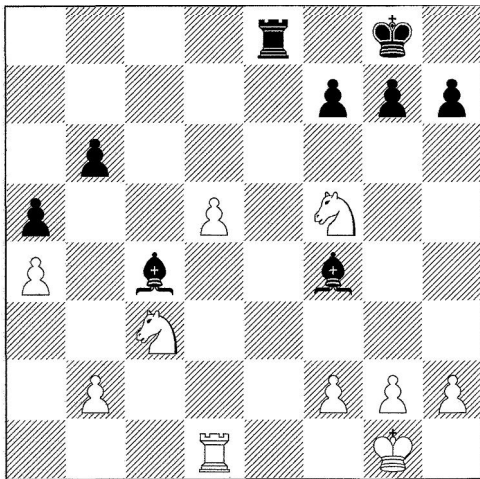
21. Ra1-e1 Bd7-f5

Can someone comment on this move? Black.

22. a2-a4 Bd6-f4

And this one? Black.

23. Nf3-d4 Bf5-d3  
24. Re1xe8+ Rc8xe8  
25. Rf1-d1 Bd3-c4  
26. Nd4-f5 b7-b6



27. Rd1-d4?? Re8-e1#

That's all folks! Black wins!

The Byte 1 acknowledged it had lost the game but the display (I Lost ("Perdi"-Portuguese) LED) but it was also flashing Nf5-g7! Does anybody know if the CC7 also behaves like this?

Ismenio

*HV: A very, very strange game ... mate in one move!?*  
*Is there any Chess Challenger 7 that make also 27. Rd1-d4?*

---

### **Programmierer / Programmer**

- Ron(ald) Nelson

### **Baujahr / Release**

- Erste Einführung: Mai (?) 1980 (?)

### **Technische Daten / Technical specifications**

- Mikroprozessor: Z80A
- Taktfrequenz: 4 MHz
- Programmspeicher: 4 KB ROM
- Arbeitsspeicher: 512 byte RAM

### **Spielstärke / Playing strength**

- Spielstärke: ca. 1270
- 

### **Literaturhinweise / References / Literatuuroverzicht**

- Kurt Kispert's website: Sammlung Alwin Gruber.
- ChessBits 15/01 S. 59 (Advertentie Alwin Gruber).
- Foto van Manfred Vellmer (15.09.2003).
- CSS 6/90 S. 23: HCC advertentie.

### **Internet**

- [http://www.ismenio.com/chess\\_byte\\_xd300.html](http://www.ismenio.com/chess_byte_xd300.html)
  - [http://www.chesscomputeruk.com/html/splice\\_byte\\_xd\\_300.html](http://www.chesscomputeruk.com/html/splice_byte_xd_300.html)
  - <http://www.schach-computer.info/wiki/index.php/Splice>
  - <http://www.splice.com.br/>
- 

Last Updated on June 29, 2009