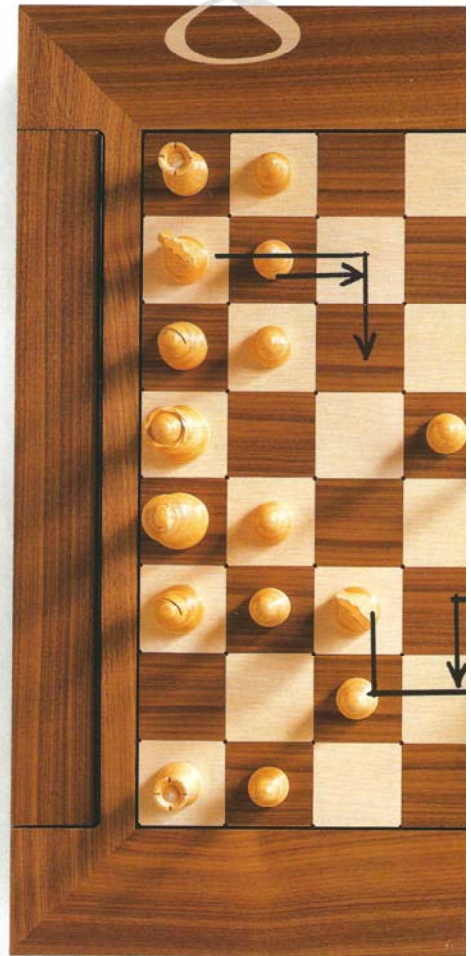




TECHKNOWLEDGE

cogit



M A N E U V E R I N G

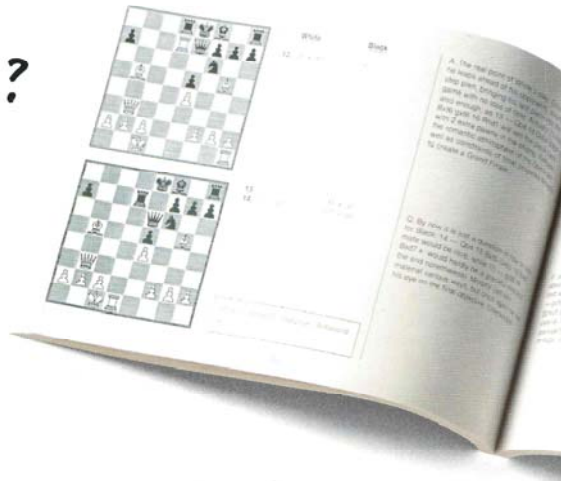
WIN
LOSER

CONTEMP

Saitek English brochure 1993 - Part 2

(photo copyright © by <http://www.schaakcomputers.nl/>)

Can You think of
a better way
to improve your game?



1. Learn from Paul Morphy



2. Learn from Rubinstein



3. Learn from Fischer



4. Learn from Kasparov

KASPAROV TURBOTM ADVANCED TRAINER

Art. No.209



Superb program and integrated training system make this computer a challenging chess opponent and fantastic value. Comes with 190-page Advanced Trainer book.

- A table-top computer - plays chess up to top club level.
- The handsome cabinet of Turbo Advanced Trainer contains a powerful program that can beat over 98% of all regular chess players, yet it is still suitable for enthusiastic beginners.
- 64 levels of play including Sudden

Death, tournament and beginner levels.

- Shows how it is thinking ahead, ideal for learning.
- Advanced coaching features including:
 - tactical mistake and capture alerts

- position evaluation.

- 8 master games with 64 position studies built into the computer and explained in the enclosed 190-page Advanced Trainer book: *Step-by-step Program to Chess Mastery.*
- Remembers an unfinished game and last 34 ply for up to 18 months.

Kasparov Turbo Advanced Trainer

(photo copyright © by <http://www.schaakcomputers.nl/>)

KASPAROV VIRTUOSO™

Art. No. 411

An elegant wooden chess computer with a strong program - a beautiful accessory for your home and a challenging opponent!

- Classic styling. Carefully crafted to a luxury finish with carved wooden pieces.
- For beginners up to serious club level players.
- Sensory chessboard registers each move, the powerful program plays the chess.
- Choose from 64 levels of playing strength, including casual, tournament, speed chess, Sudden Death, problem solving up to mate-in-8, plus a handicap level for beginners.
- Suggests moves, shows how it is thinking, allows take-back.
- No unsightly cables needed - one set of alkaline batteries gives 150 hours of play.



KASPAROV GK 2000™

Art. No. 272

Top of the range advanced technology, with impressive strong program. Outstanding features plus full info LCD.

- Sleek cabinet, easy operation: a chess computer for enthusiasts and club players.
- LCD shows how the computer is thinking, time for both sides, take-back, problem solving, main continuation and more.
- With an estimated 2100 Elo performance, this very high speed program is suitable for around 98% of players.
- 64 levels including Sudden Death, tournament and beginners playing levels.
- Shows intended move and position evaluation; take-back up to 30 ply.
- Thinks in opponent's time
- User selectable book openings
Library: choose from Active, Passive, Tournament, complete book, no book.
- High speed Selective Search or powerful Brute Force Search program: choose between the two



Kasparov Virtuoso & GK 2000

(photo copyright © by <http://www.schaakcomputers.nl/>)

CHESS GROUP **3**

Affordable luxury and ease of play

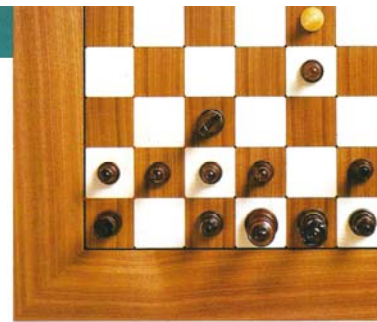
At the top of the range Saitek offers 4 products in which beauty, luxury and strength combine with superlative features for those who want only the best.

Prisma is ideal for chess enthusiasts with its strong new program, integrated LCD chessboard and 11-character info line, offering a wealth of information feedback and analysis.

RISC 2500 is already proving to be a winner: one of the strongest chess computers available at such a highly competitive price.

The beautiful hand-crafted luxury of **Galileo** and **Renaissance** offers unparalleled ease of play through the patented Blitz Board and Renaissance's quad-lamp move indication system. The award-winning Brute Force and SPARC modules have revitalised these wooden chessboards: ensuring their continued success as top performers.

From the quality of the hand-finishing to the impressive developments in programming strength - nothing has been spared to achieve the perfect chess computer for the discerning player.



Affordable luxury and ease of play

(photo copyright © by <http://www.schaakcomputers.nl/>)

KASPAROV PRISMA™

Art. No. 281



Exciting chess computer, with full LCD chessboard giving a wealth of information feedback, offers an exceptional range of features coupled with a strong 32K program for speedy problem-solving.

- 64 levels, including handicap levels, tournament and problem-solving.
- LCD chessboard allows you to review the game, analyze past and proposed moves, watch the computer play against itself, other hints and other info. Take-backs up to a whole game
- 11-character LCD info line gives live feedback on elapsed and remaining times for both black and white, depth of search, mode, score and Check/Draw/Mate status.

KASPAROV RISC 2500™

Art. No. 322

Super power, incredible value: a chess computer to challenge your skill and compel you to even higher levels of achievement.

- One of the first dedicated chess computers to use a full 32-bit RISC processor.
- Information-rich LCD shows:
 - time for both sides
 - position evaluation
 - moves under consideration
 - depth of search
 - problem-solving
 - main continuation
- Elegant cabinet with 20cm soft-touch sensory chessboard also has LEDs showing current positions.
- Plays an unusual, almost human game, resulting in aggressive play, quite unlike other programs' safety-first approach.
- 128Kb of high-speed RAM memory can be expanded to 2Mb.
- LCD menu system provides easy access to the many options available.



Saitek Kasparov Prisma & RISC 2500

(photo copyright © by <http://www.schaakcomputers.nl/>)

KASPAROV GALILEO™

Art. No. 511

Beauty, luxury and strength. Incorporating the ultra-convenient Blitz Board!

- Full-sized and hand-made to the highest standards. The crafted wooden pieces (with 3.5 inch tall king) are sensed automatically.
- Blitz Board means pieces can be captured with one sweep of the hand - very professional!
- OSA (Open System Architecture) means it can connect to a computer for a wealth of information.
- Easy to use. Galileo recognizes new games automatically and lets you take back any number of moves, guiding you through each one.
- Library function enables you to store and replay games. Watch Galileo analyze alternative play and evaluate the position.



- 32 skill levels, including special levels for tournament play, speed chess, analysis and problem solving up to mate-in-20. It even has beginner levels!
- Never out of date. Add in new programs in OSA Modules.

KASPAROV RENAISSANCE™

Art. No. 512



Simply the ultimate, most advanced chess computer in the world.

- Beautiful, full-sized, hand-crafted chessboard hiding the most advanced chess computer in the world.
- 81 LED lamps (one on each corner of each square) show how to move pieces # (Quad-Lamp Move-Display system).
- Incorporates the patented Blitz Board

system and full remote sensors.

- Patented LCD chessboard shows main continuation, position verification and set up.
- Full OSA (Open System Architecture) means it connects to a Personal Computer for a wealth of information.
- Stores games for replay later, on the board or on the LCD screen.

- 32 skill levels including special levels for tournament play, speed chess, analysis and problem solving up to mate-in-20. It even has beginner levels!
- Never out of date. Add in new programs in OSA modules.



19

Saitek Kasparov Galileo & Renaissance

(photo copyright © by <http://www.schaakcomputers.nl/>)

MODULES AND ADAPTERS - CHESS

Specially designed to fit Renaissance and Galileo these powerful modules can be easily installed.

Kasparov Brute Force

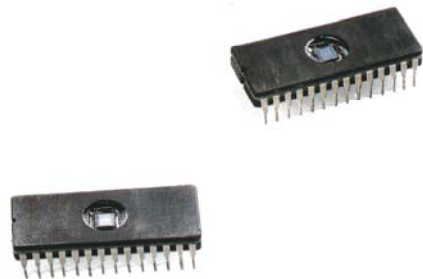
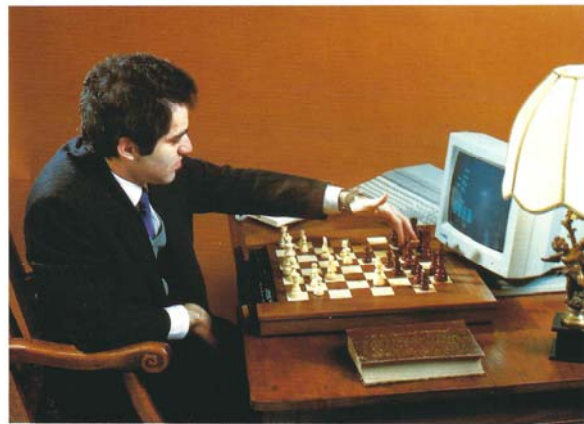
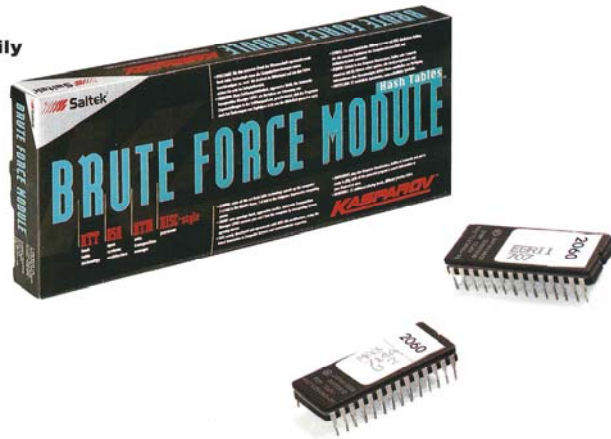
- The top chess computer at the 1992 Dutch Open
- Estimated playing strength: 2250 Elo (U.S. rating)
- State-of-the-art 'hash-table' technology
- Newly-developed microprocessor with RISC-style architecture
- New openings book, aggressive tactics
- 32 additional levels, different playing styles
- Superb positional knowledge and powerful endgame

Kasparov SPARC

- Revolutionary, strong 32 bit SPARC RISC microprocessor
- Estimated playing strength: 2400 Elo (U.S. rating)
- Very high performance 256Kb program,
- 512Kb DRAM (expandable to 4Mb) for the hash-table memory.
- 32 additional levels

Cable to connect Galileo and Renaissance to Personal Computers

- Adapter Cable I: Universal model for computers equipped with RS-232C serial interfaces, Atari ST
- Adapter Cable III: IBM PC series and compatibles



Saitek Kasparov Brute Force & SPARC

(photo copyright © by <http://www.schaakcomputers.nl/>)

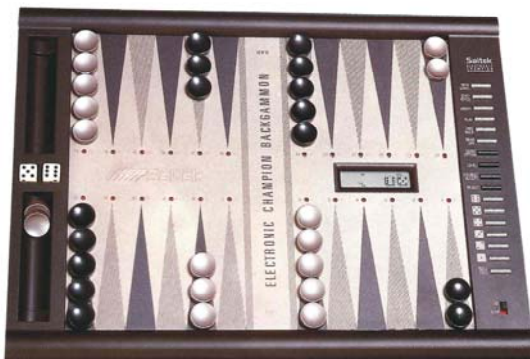
INTELLIGENT GAMES

World leader in Intelligent Games, Saitek offers a range of products in bridge, backgammon and blackjack, and the list is expanding!

In bridge, the elegant lap-top **Pro Bridge 510**, with its strong, improved program, complements the new **Pro Bridge 310**. Separately, they offer unrivalled choice in high-performance bridge computers. Together, they provide a unique opportunity for 2 players to play together: as a team or on opposing sides. The portable **Bridge Shadow** rounds out the range. Between them, these 3 products cater to the very wide demands of the ever-growing numbers of keen bridge players around the world.

The Backgammon range offers both a table-top and a hand-held LCD game. The table-top, **Electronic Champion Backgammon**, is proving to be a long-term winner while the **Turbo Backgammon** combines strong programming with superb design. Features, strength and ease of operation are way ahead of the competition.

Pro Blackjack is an exciting and extremely successful development for Saitek, combining a fast-paced game with winning strategies, through hints from the dealer and card counting techniques. This year two new, innovative poker games extend the range: **Pro Draw Poker**, one of the most advanced hand-held LCD card games on the market, is complemented by **Pro Video Poker**, a fast-paced game that provides non-stop entertainment.



Bridge - Backgammon - Blackjack - Poker

(photo copyright © by <http://www.schaakcomputers.nl/>)

BRIDGE SHADOW™

Art. No. 612



The compact easy-to-use bridge computer that entertains while it coaches. Ideal for the beginner and casual player.

- 16K program, plays Standard American 5 card majors.
- 8 levels of play allow you to select skill and bidding aggressiveness.

- Compact design slips into bag or briefcase so you can take it anywhere.
- Shows your own and dummy's hands clearly; scores, shuffles and deals automatically.

Enclosed Introduction to Bridge includes all the rules of the game.

PRO BRIDGE 310™

Art. No. 611

The world's strongest hand-held Bridge computer in an elegant and ergonomic format.

- Ideal for anyone who likes to play a good game of bridge.
- Strong program plays Standard 5-card majors and ACOL.
- Large easy-to-easy LCD displays your own and dummy's hands, tricks made, score, vulnerability, trumps and more.
- Follows the rules and offers hints, if asked.
- Computer automatically shuffles and deals, keeps score and follows suit.

- Two players: two computers. Connect Pro Bridge 310 to Saitek's Pro Bridge 510: an innovative development that allows two or more players to practise their skills, each with their own LCD screen (cable available with Pro Bridge 510).



Saitek Bridge Schadow & Pro Bridge 310

PRO BRIDGE 510™

Art. No. 620B

Here is THE bridge computer for the serious player wanting to play a better game of bridge.

- The 128K program challenges even club players, while the integrated coaching features help beginners develop skill and expertise.
- Play all major bridge systems - Standard American 4 and 5 card majors, ACOL, French 5 card majors and Precision Club.
- Pick and choose your own bidding conventions from the more than 30 programmed into the computer- Pro Bridge 510 ensures they are compatible.
- Plays Rubber and Duplicate bridge (Teams of Four).
- 10 levels of skill to choose, from beginner to club standard.
- Choose your deal: shuffled or from the deal library (9,999,999 deals) or create a deal yourself.
- Gives hints on bidding or play, allows takeback of a bid or card. Or replay the entire deal from the start—great for analysis and study!



- Menu options are displayed on the two-line 32-character LCD screen while additional LCD screens show your hand and dummy, or all 4 hands.
- Cable connects Pro Bridge 510 to Pro Bridge 310 : an ideal way for 2 players to practise their skills.



Accessories - bridge

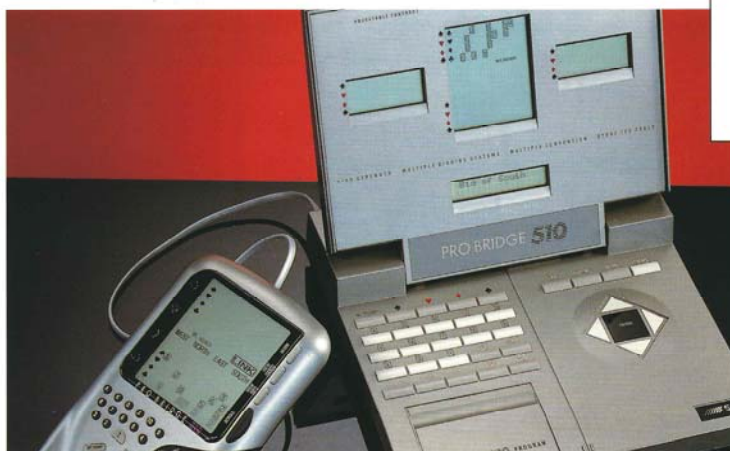
Two computers, two players: play as partners or play as opponents

- Connect Pro Bridge 510 with Pro Bridge 310.
- Use all the features of Pro Bridge 510 while these 2 computers are linked up.
- Cable connection is available with Pro Bridge 510 and in the Pro Bridge 500 upgrade kit.
- A unique opportunity for 2 players to play a serious game of bridge, each with their own LCD screen.

Upgrade Kit

Pro Bridge 500 can be easily upgraded to match the new and improved Pro Bridge 510 standard.

- Stronger bidding and play.
- 2-player option (cable connection to Pro Bridge 310).
- Cable included.



Saitek Pro Bridge 510

(photo copyright © by <http://www.schaakcomputers.nl/>)

BACKGAMMON AND BLACKJACK

ELECTRONIC CHAMPION™ BACKGAMMON

Art. No. 681

Strong dedicated backgammon computer - with 16K award-winning program of the 1989 Computer Olympiad - in a handsome table-top game.

- Quick response program keeps you on your toes right to the end of a game.
- Match your opponent's strength and playing style to yours - or challenge a stronger player: 30 combinations of strength and aggressiveness available.
- Computer as coach - suggests moves, allows take-back, rejects illegal moves and plays against itself.
- LCD shows evaluation of the position and the chance of a blot being hit, and the score.
- Not just one but 5 games to play: Backgammon, Jacquet, Tric Trac, Moultezim and Plakoto - and it knows all the rules.
- Strength, versatility and fun for players of all levels.
- Takes 4 AA alkaline batteries (not supplied) for 150 hours' play.



TURBO™ BACKGAMMON

Art. No. 684

The strongest programme on the market in this new handheld game.

- Convenient portable LCD game.
- 32K program offers 10 levels of skill and 3 styles of play - build up your confidence from beginner to winner.
- Computer as coach - suggests moves, allows take back and rejects illegal moves, or watch it play a game.
- LCD is full of information - evaluates the position and the chance of blots being hit and gives the score.
- Not just one but four games to play - Backgammon, Jacquet, Tric Trac and Moultezim.



PRO BLACKJACK™

Art. No. 683

A pocket-sized LCD blackjack computer which shows you how to win and have fun! A fast-paced game with sophisticated program—so easy to use.



- Now you don't have to go to Las Vegas to feel all the excitement of a casino on the Strip.
- Gives advice on betting: hit, stand, split, insurance and double down; even introduces you to card counting to improve your skills.
- Choice of 1 or 6 decks of cards and of 1 to 4 human players against the dealer (the computer).
- You won't lose your shirt on this! Bets between \$10 and the house limit of \$1,000.
- Large LCD guides you through each game; superb sound effects add to the excitement.



Saitek Electronic Champion Backgammon Turbo Backgammon & Pro Blackjack

(photo copyright © by <http://www.schaakcomputers.nl/>)

FEATURES TABLE

Product Features	 Portable Chess					 Table Top Chess					
	118	115C	117	146	147	166	165D/165H	164D	208	209	272
Name	Calculator Chess	Pocket Plus Trainer	Traveller	Travel Champion	Champion Advanced Trainer	Junior Chess	Sensor Chess (Sensor Chess Turbo)	Mk 12 Trainer	Olympiad	Turbo Advanced Trainer	GK 2000
Strength****	1300 / 1010	1550 / 1345	1550 / 1345	2060 / 2058	2060 / 2058	1550 / 1345	1550 / 1345	1650 / 1345	1650 / 1420	2130 / 2097	2130 / 2097
Beginner											
Average player											
Regular											
Experienced/Club											
Expert/Master											
Levels of play; level/setting combinations	64	16/59†	16/34	64	64	16/17	16/32	16/107	64	64	64
Memory (Kbytes)	2K	8K	8K	16K	16K	8K	8K	8K	8K	16K	16K
LCD characters	8	-	-	5	-	-	-	-	3	-	5
Display move under consideration (ply)	-	1	-	4	1	-	-	1	1	1	4
Position evaluation	-	+	-	+	+	-	-	+	+	+	+
Long term memory	+	+	+	+	+	+	+	+	+	+	+
Thinks in opponent's time	-	-	-	+	+	-	-	-	-	+	+
Take back (ply)	2	6	6	30	34	6	6	6	6	34	30
Openings library (Effective no. of individual moves)	-	250	250	2000	2000	250	250	250	250	2000	2000
Coaching	-	+	-	+	+	-	-	+	+	+	-
Solves mate-in problems	-	-	-	8	8	-	-	-	4	8	8
Batteries (Alkaline)	1 CR2032	3 AAA	3 AAA	3 AA	3 AA	4 AA	4 AA	4 AA	4 AA	4 C	6 C
Hours playing*	300	250	250	70	70	300	300	300	300	150	130
Mains adapter socket	-	-	-	-	-	-	-	-	+	+	+
Weight (Kg)	0.1	0.15	0.44	0.33	0.4	0.72	0.72	0.6	0.96	1	1.4
Weight (lbs)	0.22	0.33	0.20	0.73	0.88	1.58	1.58	1.32	2.11	2.2	3.08
Dimensions (cm)	13.7x8.4x1.3	16x10.4x1.7	19x10.5x2	23x30.7x3.1	17.2x13.5x2.7	30.5x22.5x2.5	30.5x22.5x2.5	29x23.7x2.6	30.5x22.5x2.5	33.5x25.2x3.7	41.8x28.3x3.9
Dimensions (ins)	5.4x3.25x0.5	6.2x4.1x0.6	7.4x4.1x0.8	9x12x1.25	6.7x5.3x1.1	12x9x1	12x9x1	11.3x9.2x1.0	12x9x1	13.1x9.8x1.4	16.3x11x1.5
Giftbox size (cm)	17x13.6x2	30.5x21.2x3.9	20x13.5x3.5	18x24.8x6	36.5x23.4x4.8	39x31x7.5	39x31x7.5	32x27x5.6	41.5x33.5x7.5	43x32.3x9	50.5x35.5x9.6
Giftbox size (ins)	6.7x5.4x0.8	11.9x8.3x1.5	7.8x5.4x1.3	7.1x9.7x2.4	14.2x9.1x1.9	15.4x12.2x2.9	15.4x12.2x2.9	12.5x10.5x2.2	16.3x13.3x3	16.8x12.6x3.5	19.7x13.8x3.7
Packing	60	20	20	20	10	10	10	10	10	5	6
Price rating	*	*	*	***	****	**	***	***	***	****	*****
Kasparov Brute Force Module	-	-	-	-	-	-	-	-	-	-	-
Kasparov SPARC Module	-	-	-	-	-	-	-	-	-	-	-

* Alkaline batteries AAA /AM4 / R03 ; AA / AM3 / R6 ; C / AM2 / UM2

** Depending on modules

*** Full game + replay



**** User Programmable

Features table

(photo copyright © by <http://www.schaakcomputers.nl/>)



					Bridge							
281	411	511	512	322	612	611	620B	681	684	683	688	689
Prisma	Virtuoso	Galileo	Renaissance	RISC 2500	Bridge Shadow	Pro Bridge 310	Pro Bridge 510	Electronic Champion Backgammon	Turbo Backgammon	Pro Blackjack	Pro Draw Poker	Pro Video Poker
2000	2130	1800-2450**	1800-2450**	2500								
1935	2120	1668-2400**	1668-2400**	2466								
64	64	32-64**	32-64**	*****	8	-	12	10	10	-	-	-
32K	16K	40K-216K**	40K-216K**	256-2176K	16K	12K	144K	16K	33K	4K	6K	3K
#	-	-	#	24	+4	+4	+32	+	+	+	+	+
8	1	8	8	+	-	-	-	-	-	-	-	-
+	+	+	+	+	-	-	-	+	+	-	-	-
+	+	+	+	+	+	+	+	+	+	+	+	+
+	+	+	+	+	-	-	-	-	-	-	-	-
100	34	***	***	512	-	-	+	+	+	-	-	-
17000	2000	5000+	5000+	+**	-	-	-	-	-	-	-	-
-	-	+	+	+	-	+	+	+	+	+	+	-
16	10	20	20	15	-	-	-	-	-	-	-	-
6 C	4 AA	4 C	4 C	†††	4 AAA	4 AAA	6 AA	4 AA	4 AA	Lit/2025	Lit/2032	2 AAA
80	60	120	120	-	80	80	45	400	400	200	1000	350
+	+	+	+	+	-	-††	+††	-	-	-	-	-
1.5	1.2	4.8	4.8	1.1	0.26	0.26	1	0.9	0.27	0.12	0.12	0.12
3.3	2.64	10.56	10.56	2.42	0.57	0.57	2.2	1.98	0.59	0.3	0.3	0.3
41.9x28.3x3.7	32.3x23.7x3	52x52x5	52x52x5	41.9x28.3x3.7	20x9.9x2.8	20x10.9x3.4	22.5x22.5x4.8	36x27x2.7	28x9.2x2.6	15x7.8x2	15x7.8x2	15x7.8x2
16.3x11x1.4	12.6x9.2x1.2	20.3x20.3x2	20.3x20.3x2	16.3x11x1.4	7.8x4x1.1	7.8x4.3x1.3	8.8x8.8x1.9	14x10.5x1.1	10.9x3.6x1	5.9x3x0.8	5.9x3x0.8	5.9x3x0.8
47.5x32.5x3.7	34.1x34.1x7	76x60x6	76x60x6	57.5x35.5x10.2	32x24.3x6	32x24x5	42.5x31.5x7.5	42.5x31.5x6.5	25.1x14.5x5.5	20x13x3.2	20x13x3.2	20x13x3.2
18.5x12.7x1.4	13.3x13.3x2.7	30x23.4x2.3	30x23.4x2.3	22.6x14x4	12.5x9.5x2.3	12.6x9.5x2	16.6x12.3x3	16.6x12.3x2.5	9.8x5.7x2.1	7.9x5.2x1.3	7.9x5.2x1.3	7.9x5.2x1.3
5	6	1	1	5	10	10	10	10	10	20	20	20
*****	*****	*****	*****	*****	***	****	*****	***	***	+	**	-
-	-	+	+	-	-	-	-	-	-	-	-	-
-	-	+	+	-	-	-	-	-	-	-	-	-

Full chessboard + 11 characters + Yes † e.g. 16/59 = 16 levels of play and 59 different level setting combinations †† Cable connects Pro Bridge 510/310 ††† Adapter only

Features table

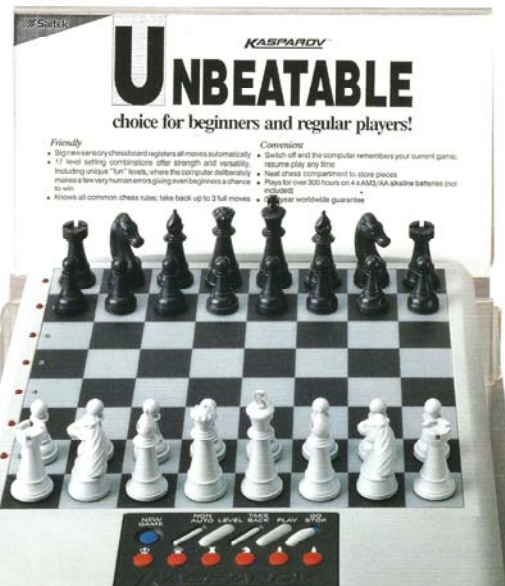
(photo copyright © by <http://www.schaakcomputers.nl/>)

POINT-OF-SALE MATERIAL

Your success is our success. To that end Saitek offers a range of point-of sale material to complement your sales efforts. Attractive displays using 'Play Me' stands, consumer catalogues, posters, product sheets and more, will reinforce your message – that Saitek products are the best on the market today. Ask your national distributor for up-to-date information on the current material available.



Dummy unit (right) and consumer leaflets (below) for in-store display.



Saitek offers a range of point-of-sale material

(photo copyright © by <http://www.schaakcomputers.nl/>)

AUTHORIZED SERVICE CENTRES

U.S.A

Saitek Industries Ltd.
Suite 101
2291 W. 205th Street
Torrance, CA 90501
Tel.: (1-310) 212 5412
Fax: (1-310) 212 0866

CANADA

Kroeger Inc.
140 Manville Rd.
Scarborough,
Ontario M1L 4J5
Tel.: (416) 752 4382
Fax: (416) 752 6022

EUROPE

Andorra

Prentisa SA
Carrer Les Canals 7, 4º
Andorra La Vella
Tel.: (33-628) 28536
Fax: (33-628) 27188

Belgium

Electronics Belgium nv
Brixton Industrial Park
Brixtonlaan 1H
B-1930 Zaventem
Tel.: (32-2) 720 8945
Fax: (32-2) 720 6384

Denmark

Pondus Products A/S
Bregnerodvej 148A
DK-3460 Birkerød
Tel.: (45) 4281 4007
Fax: (45) 4281 4072

Finland

Mantrim Oy
Salakkatie 14
SF-02170 Espoo
Tel.: (358-0) 423 933
Fax: (358-0) 423 916

France

Transecom
12 Av. des Morillons
Z.I. Les Doucettes
F-95140 Garges-lès-Gonesse
Tel.: (33-1) 3986 9630
Fax: (33-1) 3986 4357

Germany

Zens GmbH
Möringer Str. 32
D-8501 Seligenporten
Tel.: (49) 9180 2921
Fax: (49) 9180 2923

Holland

Electronics Nederland bv
Tijmuiden 15/17/19
NL-1046 AK Amsterdam
Tel.: (31-20) 6139 960
Fax: (31-20) 6136 077

Ireland

Mister Calculator
24 Duke Street, Dublin 2
Tel.: (353-1) 679 8033
Fax: (353-1) 679 8129

Italy

Intelligent Games S.r.l.
Via Ettore Ximenes 9/A
I - 00197 Roma
Tel.: (6) 321 6971
Fax: (6) 3216974

Spain

Fiamagas S.A.
C/ Sales y Ferrer, 7
E-08026 Barcelona
Tel.: (34-3) 456 55 00
Fax: (34-3) 235 43 39

Sweden

Mästarting AB
Box 2002, S-171 02 Solna
Tel.: (46-8) 627 9650/51
Fax: (46-8) 627 9652

Switzerland

Küpler Electronic AG
Soodstrasse 53
CH-8134 Adliswil
Tel.: (41-1) 710 0505
Fax: (41-1) 710 2266

United Kingdom

Systema (UK) Limited
8A Stadium Way
Reading RG3 6BX
Berkshire
Tel.: (44-734) 451 522
Fax: (44-734) 451 544
Contemporary Games Plc.
2-3 Noble Corner
Great West Road, Hounslow
Middlesex TW5 0PA
Tel.: (81) 577 1700
Fax: (81) 570 0171

MIDDLE EAST

Bahrain

Toys Centre
P.O. Box 1076, Manama
Tel.: (973)321 294/535103
Fax: (973)211 891
Telex: 8270 MOAYED BN

Dubai, U.A.E.

Union Traders
Deira Tower, P.O. Box 4072
Tel.: (971-4) 237 952
Fax: (971-4) 216 019
Telex: 48236 UNITR EM

Lebanon

Tamer Frères S.A.L.
P.O. Box 84, Beirut
Tel.: (357) 951 2499
Fax: (357) 951 2490
Telex: 05814 50226

Saudi Arabia

aDawlah Universal Elect.
Box 2154, Corniche Road
2/F Aldossary Bldg.
Alkhubar 31952
Tel.: (966-3) 898 2081
Fax: (966-3) 898 1541
Telex: 870370 MALIK SJ

Turkey

Karimpeks
Yali Cad. No. 170/A
Karsiyaka 35600, Izmir
Tel.: (9051)683800/114124
Fax: (9051) 688144

ASIA

Hong Kong

Yorter Electronics (H.K.) Ltd.
Unit 5, 20/F.,
Cheung Fung Bldg.,
23-39 Pak Tin Par St.,
Tsuen Wan, N.T.
Tel.: (852) 416 6636
Fax: (852) 412 2220

Japan

Sakura Trading Co. Ltd.
2nd Floor, Toko Bldg.
3-3, Yanagibashi 1-chome
Taito-Ku, Tokyo
Tel.: (81-3) 865 9648
Fax: (81-3) 865 9649

Singapore

INC Enterprises Pte Ltd.
No. 1 Lok Yang Way #01-08
Singapore 2262
Tel.: (65) 266-2600
Fax: (65) 266-2626
Telex: RS24112 INC

SOUTH AFRICA

Tedex
29/35 Heronmere Road,
Reuven, 2091 Johannesburg
Tel.: (27-11) 683 5800
Fax: (27-11) 683 2803
Telex: 485062 TEDJH SA

SOUTH AMERICA

Argentina

Aton S.A.
Angel Gallardo, 551
Buenos Aires, Argentina 1405

Paraguay

Miramar SOC
Anon Palma No.686/8
P.O. Box 796, Asunción
Tel.: (595-21)493 395
Fax: (595-21)443 165
Telex: 630 PY MIRAMAR

AUSTRALASIA

Australia

Computerolav
296B Whitehorse Road
Nunawading
Victoria 3131
Tel.: (03) 894 2483
Fax: (03) 894 1973

Printed in Hong Kong © 1993 Saitek Ltd. 1092
Information is correct at the time of going to press but may change from time to time.



Saitek Industries Ltd.

Suite 101, 2291 W. 205th Street
Torrance, CA 90501
U.S.A.
Tel: (1-310) 212 5412
Fax: (1-310) 212 0866

Saitek Industries Ltd.

4 Bridge Studios
318-326 Wandsworth Bridge Rd
London SW6 2TZ England
Tel: (44-71) 731 7596
Fax: (44-71) 731 7684

Saitek Ltd.

Soodstrasse 53
CH-8134 Adliswil
Switzerland
Tel: (41-1) 710 0505
Telex: 56225 MELA CH
Fax: (41-1) 710 2266

Saitek Ltd.

12/F., Chung Nam Centre
414 Kwun Tong Road,
Hong Kong
Tel: (852) 341 8211
Cable: EINSTEIN
Fax: (852) 797 9027

Saitek world wide authorized service centres

(photo copyright © by <http://www.schaakcomputers.nl/>)