

07-1985 [B-0436] Fidelity - **The Classic**

Dit eenvoudige model is de opvolger van de Fidelity **Sensory Chess Challenger**. Eigenlijk niets nieuws onder de zon, want Fidelity bedacht enkel een nieuwe naam en dito verpakking! **The Classic** verscheen als model CC8 en wat later als modeluitvoering met nummer 6079.

Players Chess News (1986)

...The **Excellence** was a hit among the general public because of price. Although not the slickest-looking device, it was certainly strong enough for your average nonserious player. Most department stores are looking for a top model of not much over \$100. Fidelity also released another low-end product, **The Classic** ('C' - 'D' strength) to help secure that market area...

Source: PCN (International Players Chess News), November 1986.

2.6 LEVEL KEY (LV)

The Classic has eight different levels of playing difficulty.

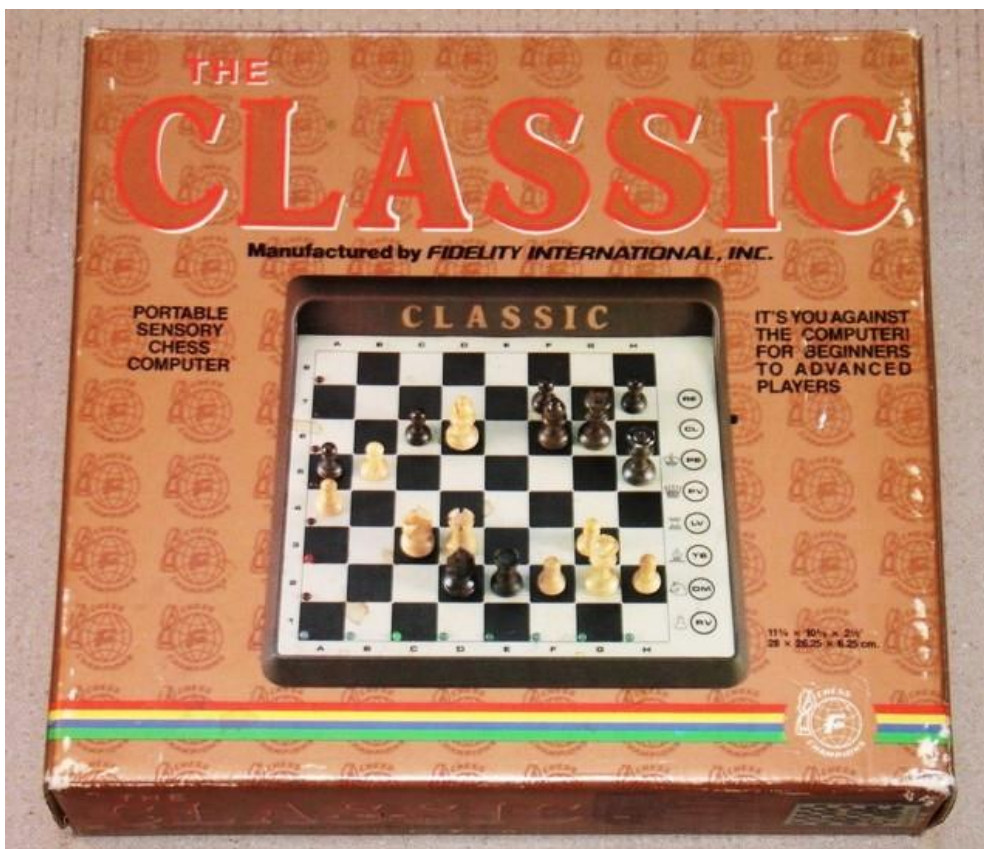
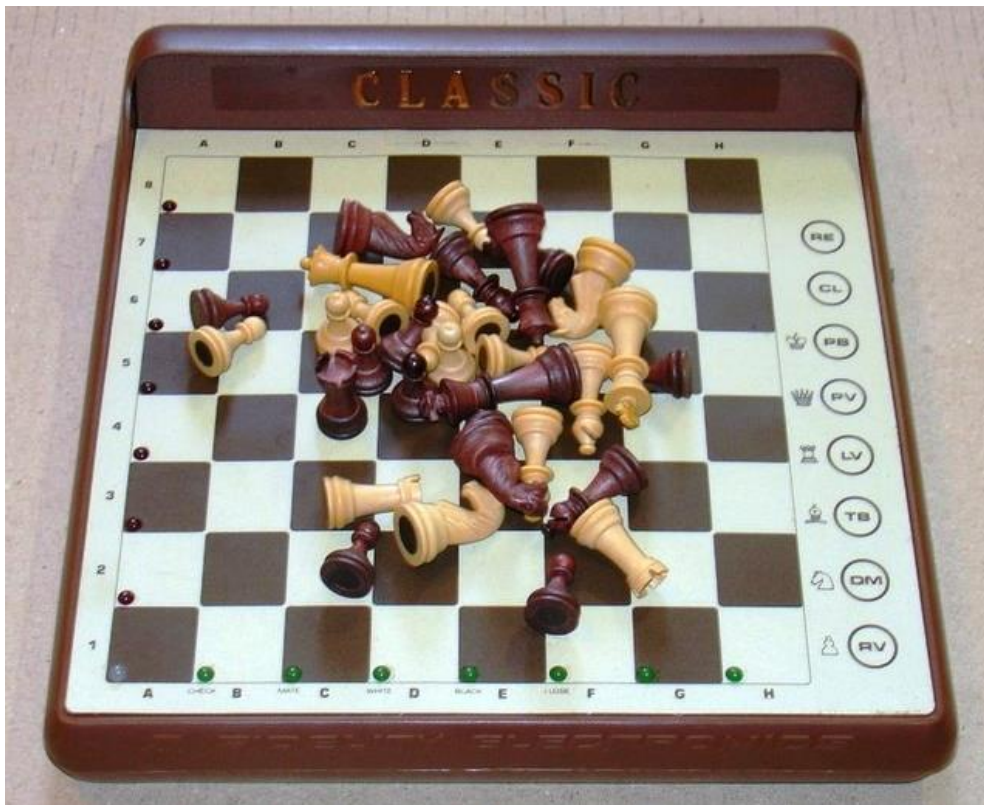
<u>Playing Level</u>	<u>Average Response Time</u>
Level 1	5 seconds
Level 2	10 seconds
Level 3	15 seconds
Level 4	30 seconds
Level 5	1 minute
Level 6	2 minutes
Level 7	3 minutes
Level 8	Infinite (mate-in-two)

When the computer is first turned on, Level 1 is automatically selected. To change levels, simply press the LEVEL KEY. The first time the LEVEL KEY is pressed, the A1 LED will light to indicate Level 1 is currently activated. Pressing the LEVEL KEY again will turn on the 2 LED, indicating Level 2, and so on back to Level 1. After you have chosen your desired level of play, either press the CLEAR KEY or press down on any board square.

2.7 INFINITE MODE (LEVEL 8)

Level 8 allows no limit to the time used in making each move. The computer will continue to search, looking deeper and deeper until it finds a forced mate or until the computer's search is halted by you. When halted, Classic will make the best move it has found thus far in its search. You can halt Classic's thinking at any time by depressing the RV KEY for about 2 seconds. Keep in mind that the very early moves into the game may be from the Classic's book opening library and, therefore, those moves will be made immediately until the Classic is "out of book" (See Section 1.12).

The Classic Level Key...



The Classic – Portable Sensory Chess Computer

(photo copyright © by <http://www.schaakcomputers.nl/>) (600 dpi)

CLASSIC



Model CC8

ENJOY PORTABILITY WITH FEATURES AND SIZE OF OUR MORE ADVANCED MODELS. BATTERY OPERATED, CHESS CHALLENGER IS READY TO TEST YOUR SKILLS ANYTIME, ANYWHERE.

SOFTWARE FEATURES:

- Eight levels of playing difficulty from beginner to advanced.
- Levels changeable during game.
- Random computer responses make almost every game different.
- Take-Back feature allows you to take back 2 half-moves.
- Thinks on opponent's time for faster computer responses.
- Play white or black — change sides any time during a game.
- If available, and when asked, the computer will suggest a move for its opponent.
- Position verification by computer memory recall at any time during a game.
- Problem mode lets you set up mid-game positions or add and subtract pieces during a game.

SOFTWARE SPECIFICATIONS:

80C50 Processor running at 6 megahertz clock speed. Memory capability is 32,000 bits of Read Only Memory (ROM). 256 bits of Random Access Memory (RAM).

HARDWARE FEATURES:

- 8" x 8" sensory playing surface automatically records your moves and illuminates computer's moves.
- Battery life 500 to 1000 hours.
- 16 Light Emitting Diodes (LED) indicate moves.
- Beep tone sounds automatically to inform you of proper entries and computer moves.

HARDWARE SPECIFICATIONS:

Durable molded housing with storage compartment on underside of housing for chess pieces. Includes magnetic pieces and playing surface (king 2" tall). Uses 4 "C" size alkaline batteries (not included). 11¼" x 10⅝" x 2½".



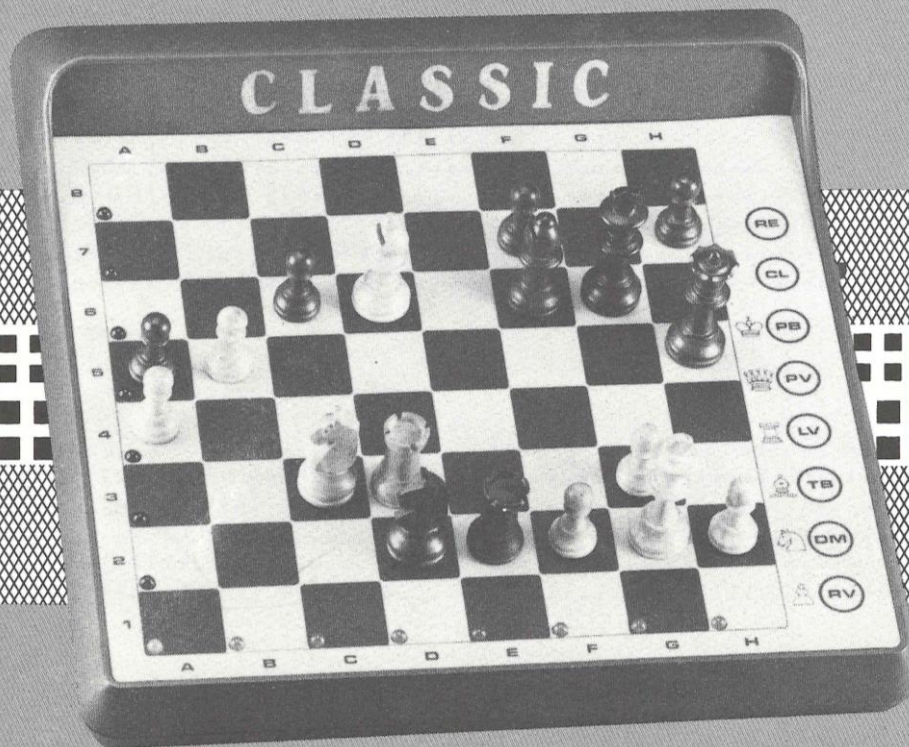
FIDELITY INTERNATIONAL, INC.

13900 N.W. 58 Ct., Miami, Florida 33014
Telephone: (305) 557-9800. TELEX: 51-5174

The Classic – Portable Sensory Chess Computer

(photo copyright © by <http://www.schaakcomputers.nl/>) (600 dpi)

THE CLASSIC
OWNER'S MANUAL
INSTRUCTION BOOKLET
MODEL CC8



The Classic – Portable Sensory Chess Computer

(photo copyright © by <http://www.schaakcomputers.nl/>) (600 dpi)

NAME	SILVER BULLET	CLASSIC	GAMBIT
MODEL NO.	6087	6079	6095 / 6084
ESTIMATED RATING	1500	1500	1500
MICROPROCESSOR	80C50	80C50	80C50
MEGAHERTZ SPEED	6	6	6
LEVELS	8	8	8
ROM (BYTES)	4K	4K	4K
RAM (BYTES)	256	256	256
BOARD LEDS	16	16	16
DISPLAY WINDOW	—	—	—
INPUT SYSTEM	Sensory	Sensory	Sensory
BOOK OPENINGS	100	100	100
CARTRIDGES	Yes	—	—
TAKES BACK MOVES (PLY)	2	2	2
CLAIMS DRAWS	—	—	—
THINKS ON OPPONENT'S TIME	Yes	Yes	Yes
DISPLAYS PLY DEPTH	—	—	—
PRINTER OUTLET	—	—	—
TRANSFORMER	Optional	Optional	Optional
BATTERY QUANTITY/SIZE	6/AA	4/C	4/C
MAXIMUM BATTERY LIFE HOURS	300	500	250 / 500
CHESS BOARD: INCHES CENTIMETERS	4 x 4 (10 x 10)	8 x 8 (20 x 20)	8 x 8 (20 x 20)
OVERALL SIZE: INCHES CENTIMETERS	8.5 x 4.5 x 1.8 (21.25 x 11.25 x 4.5)	11.25 x 10.6 x 2.5 (28 x 26.25 x 6.25)	11.25 x 10.6 x 1.6 (28 x 26.25 x 3.75)
VOICE FEATURE	—	—	Yes / No
HOUSING	Plastic	Plastic	Plastic

Fidelity »Intelligent Computer Games« 1987

The Silver Bullet (1986), **The Classic** (1985), **The Gambit** (model 6084 uit 1986 en **Gambit Voice** als model 6095 uit 1987) zijn schaaktechnisch identiek!!

(photo copyright © by <http://www.schaakcomputers.nl/>) (600 dpi)



The Classic - Portable Sensory Chess Computer

Programmierer / Programmer

- Ronald C. Nelson

Baujahr / Release

- Erste Einführung: Juli (?) 1985

Technische Daten / Technical specifications

- Mikroprozessor: 80C50
- Taktfrequenz: 6 MHz (!)
- Programmspeicher: 4 KB ROM
- Arbeitsspeicher: 256 byte RAM

Spielstärke / Playing strength

- Spielstärke (DWZ/Elo): ca. 1300

Verwandt / Related (more or less)

- Fidelity Chess Challenger 7
- Fidelity Chess Challenger Super 7
- Fidelity Chess Challenger Sensory 8
- Fidelity Sensory Chess Challenger 6
- Fidelity Chess Challenger Poppy
- Fidelity Sensory Chess Challenger
- Fidelity The Gambit (first edition – model 6084)
- Fidelity The Gambit (second edition – model 6084D)
- Fidelity The Gambit Voice
- Fidelity The Silver Bullet