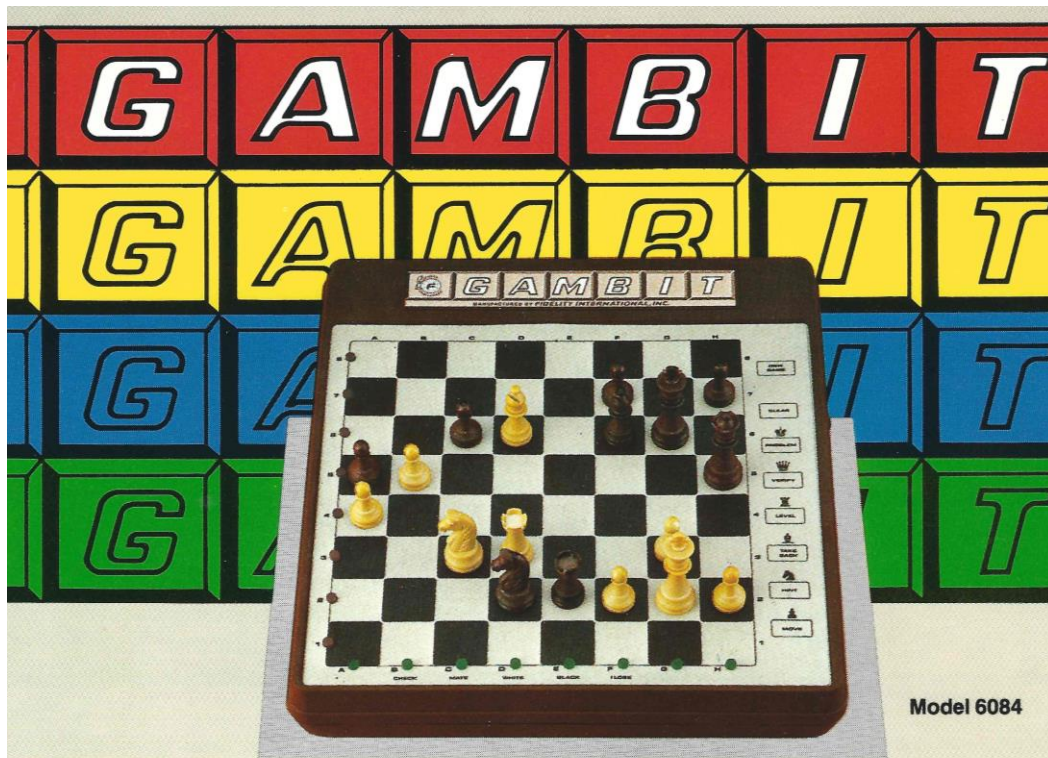


07-1986 [B-0421] Fidelity - **The Gambit** (first edition - model 6084)

De eerste versie van The Gambit (model 6084) verscheen in 1986 met een strak nieuw design.



Model 6084

**ENJOY PORTABILITY WITH FEATURES AND SIZE OF OUR MORE ADVANCED MODELS. BATTERY OPERATED, CHESS CHALLENGER IS READY TO TEST YOUR SKILLS ANYTIME, ANYWHERE.**

**SOFTWARE FEATURES:**

- Eight levels of playing difficulty from beginner to advanced.
- Levels changeable during game.
- Random computer responses make almost every game different.
- Take-Back feature allows you to take back 2 half-moves.
- Thinks on opponent's time for faster computer responses.
- Play white or black—change sides any time during a game.
- If available, and when asked, the computer will suggest a move for its opponent.
- Position verification by computer memory recall at any time during a game.
- Problem mode lets you set up mid-game positions or add and subtract pieces during a game.

**SOFTWARE SPECIFICATIONS:**

80C50 Processor running at 6 megahertz clock speed. Memory capability is 32,000 bits of Read Only Memory (ROM). 256 bits of Random Access Memory (RAM).

**HARDWARE FEATURES:**

- 8" x 8" sensory playing surface automatically records your moves and illuminates computer's moves.
- Battery life 500 to 1000 hours.
- 16 Light Emitting Diodes (LED) indicate moves.
- Beep tone sounds automatically to inform you of proper entries and computer moves.

**HARDWARE SPECIFICATIONS:**

Durable molded housing with storage compartment on underside of housing for chess pieces. Includes magnetic pieces and playing surface (king 2" tall). Uses 4 "C" size alkaline batteries (not included). 11¼" x 10⅝" x 2½". Optional AC adaptor.

1986



**FIDELITY INTERNATIONAL, INC.**

13900 N.W. 58th Ct., MIAMI, FLORIDA 33014  
Telephone: (305) 557-9800 Telex: 51-5174 Telefax: (305) 558-8487

**Fidelity The Gambit**

(photo copyright © by <http://www.schaakcomputers.nl/>) (600 dpi)

Gerätetyp	Novag Presto	Mephisto Monaco	SciSys Concord II	CXG Enterprise S	Fidelity Gambit	CXG Advanced Star Chess
Meisterspieler						
Turnierspieler						
Vereinspieler						
Routinier						
Fortgeschrittener						
Gelegenheitsspieler						
Anfänger						
Preis (DM)	198.00	198.00	239.00	248.00	248.00	248.00
Hersteller	Novag	Hegener + Glaser	SciSys	CXG	Fidelity	CXG
Land	Hongkong	Deutschland	Hongkong	Hongkong	USA	Hongkong
Microprocessor	8049	6301	8049	8049	80C50	6301
Betrieb	Netz/Batterie	Batterie	Netz/Batterie	Netz/Batterie	Netz/Batterie	Netz/Batterie
Programmgröße	4 KByte	16 KByte	4 KByte	4 KByte	4 KByte	16 KByte
Programm austauschbar	–	–	–	–	–	–
Zusatzmodul möglich	–	–	–	–	–	–
Rechner austauschbar	–	–	–	–	–	–
Bedienung	Drucksensorbrett	Stecksensorbrett	Drucksensorbrett	Drucksensorbrett	Drucksensorbrett	Stecksensorbrett
Spielfeldgröße (cm)	20 × 20	9 × 9	20 × 20	30 × 30	20 × 20	8 × 8
Schachuhr	–	–	–	–	–	–
Zugzähler	–	–	–	–	–	–
Bedienungskomfort	niedrig	mittel	mittel	mittel	mittel	mittel
Spielstufen	8	16	9	16	8	44
Partie nachspielbar	–	–	–	–	–	ja
Einblick in Rechenvorgang	–	bedingt	–	bedingt	–	bedingt
Kann Unterverwandlung	–	ja	–	–	–	ja
Stellungsbewertung	–	–	–	–	–	–
Eröffnungsbibliothek	unter 100 Var.	über 400 Var.	unter 100 Var.	unter 100 Var.	unter 100 Var.	über 400 Var.
Zubehör	–	–	–	–	–	–



## Helmut Pfleger & Ossi Weiner Schachcomputer – Gegner und Freund

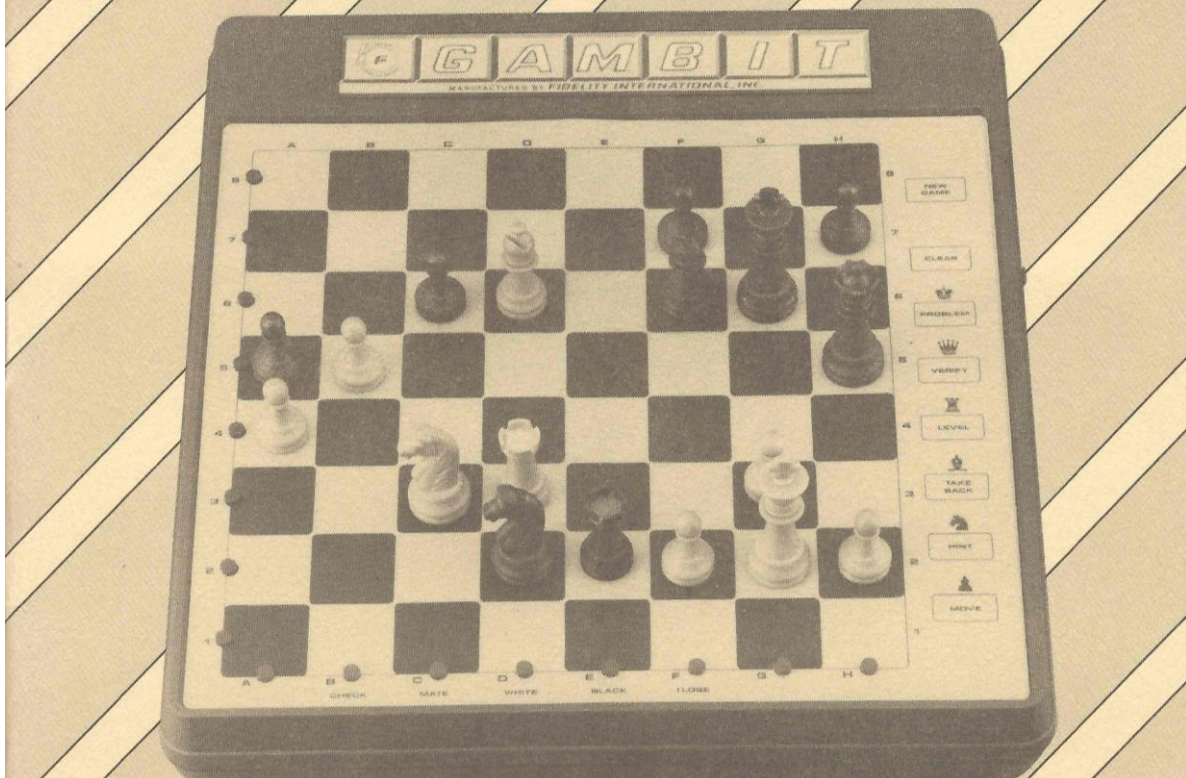
Hardcover: 188 pages  
 Publisher: Nymphenburger (1986)  
 Language: German  
 ISBN-10: 3485016969  
 ISBN-13: 978-3485016964  
 Product Dimensions: 8.7 x 8.7 x 0.9 inches

[https://www.amazon.com/Schachcomputer-Gegner-Freund-German/dp/3485016969/188-2894528-2319626?ie=UTF8&\\*Version\\*=1&\\*entries\\*=0](https://www.amazon.com/Schachcomputer-Gegner-Freund-German/dp/3485016969/188-2894528-2319626?ie=UTF8&*Version*=1&*entries*=0)



# THE **GAMBIT**

**OWNER'S MANUAL  
INSTRUCTION BOOKLET  
MODEL 6084**



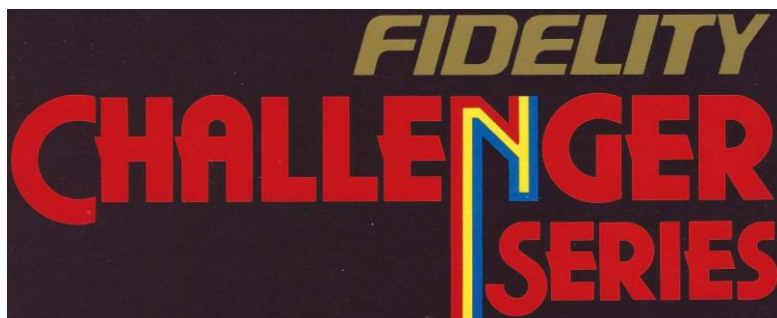
**Fidelity The Gambit (first edition)**

(photo copyright © by <http://www.schaakcomputers.nl/>) (600 dpi)

## TABLE OF CONTENTS

	PAGE
INTRODUCTION .....	1
SECTION 1 - BASIC OPERATION	
1.1 Battery Replacement/Installation .....	1
1.2 Power On .....	1
1.2.1 Board Diagram .....	1A
1.3 Setting Up The Board .....	2
1.4 The Play .....	2
1.5 Your First Move .....	2
1.6 Accidental Wrong Move .....	5
1.7 Illegal Move .....	5
1.8 En Passant .....	6
1.9 Castling .....	7
1.10 Pawn Promotion .....	8
1.11 Check and Mate .....	9
1.12 Book Openings .....	9
1.13 Thinking On The Opponent's Time .....	9
SECTION 2 - SPECIAL FEATURES	
2.1 New Game Key .....	10
2.2 Clear Key .....	10
2.3 Problem Mode Key .....	10
2.4 Mate In Two .....	12
2.5 Verify Key .....	13
2.6 Level Key .....	14
2.7 Infinite Mode (Level 8) .....	14
2.8 Take Back Key .....	15
2.9 Hint Key .....	15
2.10 Move Key .....	15
SECTION 3 - GENERAL INFORMATION	
3.1 Piece Storage .....	16
3.2 Battery Operation .....	16
3.3 Battery Installation/Replacement .....	16
3.4 Low Batteries .....	17
3.5 Specifications .....	17
3.6 AC Operation .....	17





## 2.6 LEVEL KEY

The Gambit has eight different levels of playing difficulty.

<u>Playing Level</u>	<u>Average Response Time</u>
Level 1	5 seconds
Level 2	10 seconds
Level 3	15 seconds
Level 4	30 seconds
Level 5	1 minute
Level 6	2 minutes
Level 7	3 minutes
Level 8	Infinite (mate-in-two)

When the computer is first turned on, Level 1 is automatically selected. To change levels, simply press the LEVEL KEY. The first time the LEVEL KEY is pressed, the A1 LED will light to indicate Level 1 is currently activated. Pressing the LEVEL KEY again will turn on the 2 LED, indicating Level 2, and so on back to Level 1. After you have chosen your desired level of play, either press the CLEAR KEY or press down on any board square.

## 2.7 INFINITE MODE (LEVEL 8)

Level 8 allows no limit to the time used in making each move. The computer will continue to search, looking deeper and deeper until it finds a forced mate or until the computer's search is halted by you. When halted, Gambit will make the best move it has found thus far in its search. You can halt Gambit's thinking at any time by depressing MOVE for about 2 seconds. Keep in mind that the very early moves into the game may be from the Gambit's book opening library and, therefore, those moves will be made immediately until the Gambit is "out of book" (see Section 1.12).

This level is handy for:

- 1 - Giving you complete control over Gambit's response time and
- 2 - Setting up mate-in-two problems for the computer to solve where it may need additional time to locate the solutions.

## **The Gambit Level Key**

# Re: Silver Bullet data special for Robert Weck!

Kurts Schachcomputer Forum

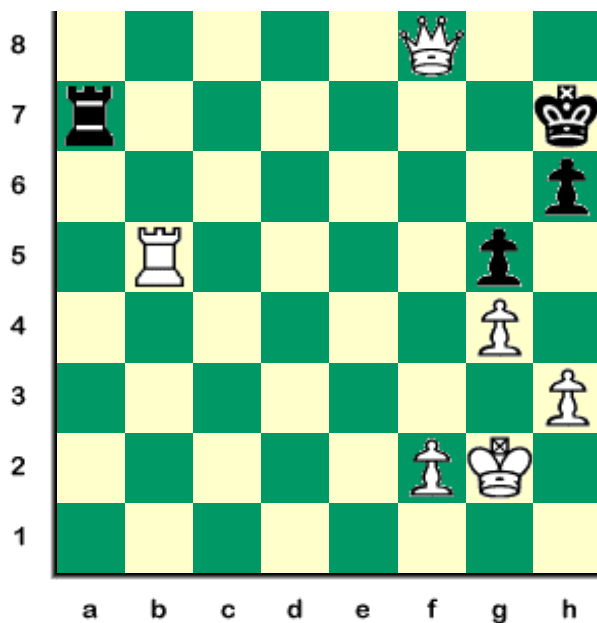
Geschrieben von Steveb am 22. Juli 2007 12:06:03: Als Antwort auf: **Silver Bullet** data special for Robert Weck, geschrieben von Hein Veldhuis am 22. Juli 2007 01:46:07:

hi Hein

**The Silver Bullet** is the portable equivalent of **the Gambit** both released at the same time. **Gambit** = Desktop. **Silver Bullet** = Portable Version. **The Gambit** is NOT the same as **Mini Sensory** with **CAC** or **Sensory Chess Challenger 6** with **BO6** modules. There are different features in **Gambit** and i think program is different. No **AC6** module for **Sensory Chess Challenger 6** was released for sale, only **BO6** (Book Module) and **CG6** (Great Games).

Phantom Force and NYTIMES DTTC send their regards,  
Steveb

Posted: Wed Jul 25, 2007 12:02 am



Due to an unprecedented demand by collectors worldwide (2 collectors) i have been asked to now compare the **Fidelity Sensory Chess Challenger 6** against the **Mini-Sensory** with **CAC module**. In the above position on the two minute level the **Sensory Chess Challenger 6** plays Qf6. So for the three different computers we have three different moves:

**Silver Bullet:** Qf5+

**Mini Sensory + CAC:** Rb6

**Sensory Chess Challenger 6:** Qf6

Conclusion: three different programs!

Regards,  
Steveb

NAME	SILVER BULLET	CLASSIC	GAMBIT
MODEL NO.	6087	6079	6095 / 6084
ESTIMATED RATING	1500	1500	1500
MICROPROCESSOR	80C50	80C50	80C50
MEGAHERTZ SPEED	6	6	6
LEVELS	8	8	8
ROM (BYTES)	4K	4K	4K
RAM (BYTES)	256	256	256
BOARD LEDS	16	16	16
DISPLAY WINDOW	—	—	—
INPUT SYSTEM	Sensory	Sensory	Sensory
BOOK OPENINGS	100	100	100
CARTRIDGES	Yes	—	—
TAKES BACK MOVES (PLY)	2	2	2
CLAIMS DRAWS	—	—	—
THINKS ON OPPONENT'S TIME	Yes	Yes	Yes
DISPLAYS PLY DEPTH	—	—	—
PRINTER OUTLET	—	—	—
TRANSFORMER	Optional	Optional	Optional
BATTERY QUANTITY/SIZE	6/AA	4/C	4/C
MAXIMUM BATTERY LIFE HOURS	300	500	250 / 500
CHESS BOARD: INCHES CENTIMETERS	4 x 4 (10 x 10)	8 x 8 (20 x 20)	8 x 8 (20 x 20)
OVERALL SIZE: INCHES CENTIMETERS	8.5 x 4.5 x 1.8 (21.25 x 11.25 x 4.5)	11.25 x 10.6 x 2.5 (28 x 26.25 x 6.25)	11.25 x 10.6 x 1.6 (28 x 26.25 x 3.75)
VOICE FEATURE	—	—	Yes / No
HOUSING	Plastic	Plastic	Plastic

### **Fidelity »Intelligent Computer Games« 1987**

**Silver Bullet (1986), The Classic (1985), The Gambit (model 6084 uit 1986 en The Gambit Voice als model 6095 uit 1987) schaaktechnisch 100% gelijk zijn!!**

(photo copyright © by <http://www.schaakcomputers.nl/>) (600 dpi)



**Fidelity The Gambit (first edition)**

**Programmierer / Programmer**

- Ronald C. Nelson

**Baujahr / Release**

- Erste Einführung: Juli (?) 1986

**Technische Daten / Technical specifications**

- Mikroprozessor: 80C50
- Taktfrequenz: 6 MHz (!)
- Programmspeicher: 4 KB ROM
- Arbeitsspeicher: 256 byte RAM
- Zugeingabe: Drucksensoren
- Zugausgabe: 16 Rand LEDs
- Stromversorgung: Batterie = 4 x C, Netz = 6V 300mA
- Maße (BxTxH): 28 x 26 x 3,8 cm
- Spielfläche: 20 x 20 cm

**Spielstärke / Playing strength**

- Spielstärke (DWZ/Elo): ca. 1300

**Verwandt / Related (more or less)**

- Fidelity Chess Challenger 7
- Fidelity Chess Challenger Super 7
- Fidelity Chess Challenger Sensory 8
- Fidelity Sensory Chess Challenger 6
- Fidelity Chess Challenger Poppy
- Fidelity Sensory Chess Challenger
- Fidelity The Classic
- Fidelity The Gambit (second edition – model 6084D)
- Fidelity The Gambit Voice
- Fidelity The Silver Bullet