

# 1992 product brochure



## FIDELITY #1

### CHESSTER CHALLENGER®

Your Intelligent Talking Computer Chess Opponent With Over 345 Phrases To Coach, Teach, Amuse & Abuse You!

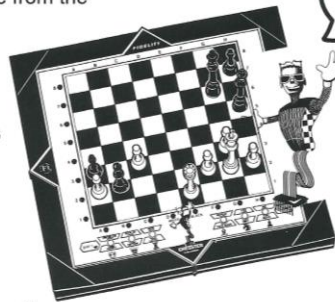
- When he talks, you'll be both amused and probably abused by his vocabulary.
- A natural sounding synthesized voice feature allows you to choose from the following selection modes.

CHESSTER makes sarcastic comments during the game. CHESSTER offers advice to improve your ability. CHESSTER announces moves for the visually impaired. CHESSTER demonstrates how the game works.

#### SAMPLE PHRASES YOU WILL HEAR:

"Nooo!, please let me talk or I'll go crazy!"

"OK, you won this one, I resign!"



Hi, I'm CHESSTER!  
How about a nice game of chess?

Even though CHESSTER may sometimes seem to be letting you win, he is probably preparing a crushing attack because he is an expert chess player at his top level - but you can set his level to as low as rank beginner.

CHESSTER obtained his brains from the American engineers at FIDELITY ELECTRONICS, his body parts from around the world, but his personality is all his own. You will most likely learn to both love and hate.... CHESSTER.

Uses 4 "AA" batteries or AC Adaptor (both not included)

Dimensions: 12x12x.9 in.

Model 6120

### CHESSTER PHANTOM

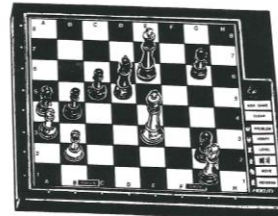


#### The Ultimate Chess Opponent!

- Incorporates the same CHESSTER vocabulary, personality and features!
- Unique motion sensor feature lights eyes for human like effect.
- Plays against you, and actually MOVES ITS OWN PIECES!
- Book Opening Library of 28,000 positions.
- Set up mid-game positions or mate problems for him to solve.
- For analysis, he will replay the game you just finished, moving the pieces automatically for both sides.
- He will suggest moves for you to make.
- You can even watch CHESSTER PHANTOM play a game against itself!
- Dimensions: 22.3 X 18.6 X 3.6 in.

Model 6126

### LITTLE CHESSTER



- Incorporates the same CHESSTER vocabulary, personality and features!
- 32 Selectable Skill Levels for Beginner to Intermediate Players with Special Beginner Levels.
- Sensory Board automatically records your moves.
- Little Chesster lights up and announces his moves.
- Beginners can take back moves and replay them.
- Hint Feature!
- Memory-save feature stores unfinished game.
- LITTLE CHESSTER can even play a game against HIMSELF!
- Includes magnetic chess pieces.
- Dimensions: 9.3 X 10.25 X .9 in.

Model 6125

## Fidelity Product Brochure 1992

NB: Little Chesster with 32 levels = model 1991 (with 25 levels = model 1992)

(Source: Fidelity Electronics International - Miami Florida USA - 1992) (photo copyright © by <http://www.schaakcomputers.nl/>) (600 dpi)

## MASTER SERIES

### MASTER 2325



Model 6129

- Officially rated at 2325 by the UNITED STATES CHESS FEDERATION! Includes signed Certificate of Authenticity, verifying that this product is a National Chess Master!
- 68020 microprocessor runs at 20 MHZ!
- 33 different playing levels to select from including time-based, depth-based, and infinite levels.
- Board LEDs and large LCD display window used to communicate game and move information.
- Strong Tournament Level opening book moves are played by default.
- A Unique Rotating Display Option allows you to watch the computer thinking about its every move.
- Official tournament colors; green and buff playing surface, with black Designer housing. Magnetic Staunton chess pieces.
- 64K ROM, 544K RAM. Uses AC adaptor (included) or 4 "AA" batteries.
- Dimensions 12 X 12 X .9 in.

### MASTER 2265



Model 6113

- Officially rated at 2265 by the UNITED STATES CHESS FEDERATION! Includes signed Certificate of Authenticity, verifying that this product is a National Chess Master!
- Speedy 68000 microprocessor runs at 16 MHZ!
- 33 Selectable levels, including eight special mate-solving levels and a User Selectable Time Control level which lets you set your own time controls!
- 16 LEDs and large LCD display used to show game and move information.
- Full Replay function allows you to replay a few moves or even an entire game!
- Book Opening Library contains over 28,000 moves from Grandmaster play.
- Rotating Display allows you to monitor the computer's thoughts.
- 64K ROM, 80K RAM. Uses AC adaptor or 4 "AA" batteries (both not included).
- Dimensions: 12 X 12 X .9 in.

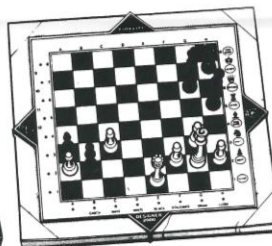
## DESIGNER SERIES

### DESIGNER DISPLAY 2100

- Certified Rating of 2100 by the U.S. Chess Federation.
- 33 Selectable levels, including 8 mate-solving levels.
- 28,000 Book opening positions.
- Display automatically shows multitude of information on command.
- Special Easy Mode.
- Coaching feature.
- Take-back feature.
- Uses 4 "AA" batteries or AC Adaptor (both not incl.).
- Dimensions: 12 X 12 X .9 in.



Model 6106



Model 6102

### DESIGNER 2000

- 12 different levels of playing strength.
- 64 selectable book openings, plus a library of 12,000 book opening positions.
- Sensory playing surface automatically records your moves.
- Problem - solving mode.
- Uses 4 "AA" batteries or AC Adaptor (both not included).
- Dimensions: 12 X 12 X .9 in.

## CHESS COACH CHALLENGER®

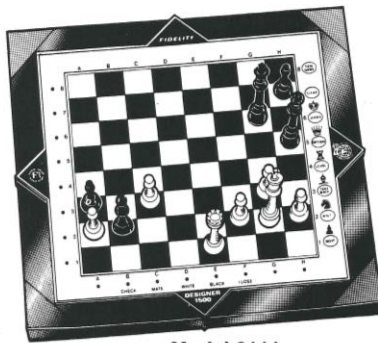
Learn to Play Chess -- Improve Your Skills! Ages 7 to Adult



During this video presentation, chess experts teach you:

- The rules of chess.
- How the pieces move.
- Strategy tips to improve your game.

The CHESS COACH Challenger® is your full-time chess opponent - ready, willing and very able to play against you anytime or anywhere.



Model 6111

#### Features include:

- FREE 50-minute educational videotape (VHS).
- Easy to play - sensory playing surface automatically records your moves.
- Coaching feature suggests moves for you to make.
- Learn by example - you can even watch the computer play against itself!
- 8 Selectable skill levels to choose from.
- Take-back feature.
- Problem - solving feature allows you to set up midgame positions for the computer to solve.
- Uses 4 "AA" batteries or AC adaptor (both not included).
- Dimensions: 12 X 12 X .9 in.

# Fidelity Product Brochure 1992

(Source: Fidelity Electronics International - Miami Florida USA - 1992) (photo copyright © by <http://www.schaakcomputers.nl/>) (600 dpi)



## GAMMON PAL CHALLENGER

Great for beginners to advanced players - computer will show all legal moves possible for each dice roll.

- 8 selectable skill levels for you to choose from.
- Computer internally rolls dice for both players, or you can use real dice.
- Internal doubling cube.
- Memory - save feature.
- You can even watch the computer play itself!
- Uses 4 "AA" batteries (not included).
- Dimensions: 8.5 X 5 X 2 in.



Model 8006

## CHESS PAL CHALLENGER



- Great for beginners and casual players.
- Selectable skill levels to choose from.
- Use keyboard to enter your moves, computer displays its moves in LCD window.
- Memory-save feature for unfinished games.
- Computer warns of pieces in danger of capture.
- Uses 4 "AA" batteries (not included).
- Dimensions: 10.6 X 9.6 X 1 in.

Model 6116



Model 7017

## BRIDGE CHALLENGER

Play bridge even if you're alone!

- The computer bids and plays one, two, three or four hands - just like a human player (s).
- The computer can deal cards randomly or select from one of 99,999 preprogrammed deals.
- Uses 4 "C" batteries or AC Adaptor (both not included).
- Dimensions: 8.5 X 6 X 2 in.

## DELUXE BRIDGE CHALLENGER

All features and bidding/playing ability of the basic BRIDGE CHALLENGER plus:

Model 7016

- Enlarged LCD display that allows you to constantly view the dummy hand during play.
- Optical scanner feature allows you to use custom - coded playing cards (included). This feature is especially handy if more than one human player is participating and you want to use real playing cards instead of the display window.
- Dimensions: 8.5 X 6 X 2 in.

## GO MENTAL

### IT'S YOU AGAINST THE COMPUTER!!!!

To play the game, the display window will flash a number-then you simply punch the key that matches the number shown-but, you'd better be quick! The more you advance through the different levels of play, the faster and faster you must respond or the computer will zap you out!



For an even greater challenge, "GO MENTAL" at a higher level, and have the computer flash you 2 numbers at once. Five different games to play!!!

This pocket game is an addictive test of one's competitive nature challenging the reflexes, and eye/hand coordination as well! Includes electronic clock with an alarm. Battery included. Dimensions: 4.25 X 4.25 x .3 in.

Model 1850

# Fidelity Product Brochure 1992

(Source: Fidelity Electronics International - Miami Florida USA - 1992) (photo copyright © by <http://www.schaakcomputers.nl/>) (600 dpi)

## MARAUDER

Full-size board, high-tech styling in black and silver, loaded with features for the gadget lover.

- Beginner to advanced skill levels.
- Uses 4 "AA" batteries (not included).
- Dimensions: 9 X 11.4 X 1 in.



Model 6121



## TRAVEL MASTER



- The World's Strongest Pocket Chess Computer with 64 Levels of play.
- Sensory board and a memory save feature are just a few of the added extras this model contains.
- Uses 4 "AAA" batteries or optional AC adaptor (not included).
- Dimensions: 5 3/4 X 6 3/4 X 7/8 in. (Open)

Model 6122

## TINY CHESS

Deluxe pocket model has an LCD display window. Advanced level program and features of our more sophisticated models, including sensory playing surface, which automatically records your moves and displays computer moves. Storage area along side of the playing surface for captured men. Memory - save feature remembers an interrupted game you may want to resume later. Includes snap on cover.

Uses 4 "AAA" batteries (not included)  
Dimensions: 4 X 6.25 X 1 in.



Model 6118

## CHESS CARD



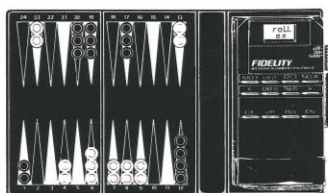
The world's smallest chess computer! Credit - card size computer in folding wallet, fits anywhere! Includes magnetic pieces, memory - save feature. LCD display shows computer's moves, enter your moves using keyboard.

Battery included.  
Dimensions: 3.7 X 2.3 X .24 in.

Model 6115

## MICRO BACKGAMMON CHALLENGER

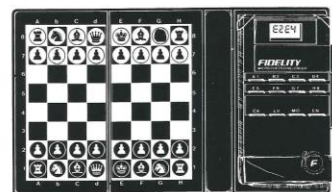
Everything fits into your pocket! Weighs only 6 ounces. Selectable skill levels to choose from. For beginners to intermediate players. Unique wallet design with foldout board and magnetic pieces. Memory-Save feature stores unfinished games. Uses 3 "AAA" batteries (not included).  
Dimensions: 4.8 X 2.6 X 1 in.



Computer displays internal dice roll for both players, or you can use your own dice if you prefer.

Model 8004

## MICRO CHESS CHALLENGER



Play chess anywhere you travel.

Model 6096

# Fidelity Product Brochure 1992

(Source: Fidelity Electronics International - Miami Florida USA - 1992) (photo copyright © by <http://www.schaakcomputers.nl/>) (600 dpi)



# Custom Hand-Crafted Chess Computers

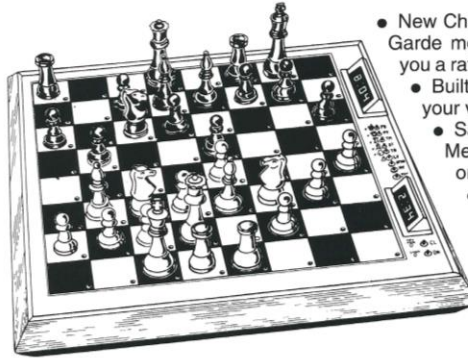
Exclusively from Fidelity Electronics International

**Fidelity announces scientific breakthroughs never before available in a chess computer!**

Each unit is custom-built to your individual specifications, as selected from Fidelity's MENU of customizing options. Although many combinations of these options are available, Fidelity has chosen the three "best" versions as listed in the chart below, making optimal use of the customizing options available.

Regardless of which version you choose, ALL new Elite models include the following special features:

- A certified Master rating.
- The famous "Auto Sensory" Elite Avant Garde wood housing, complete with two Display Windows.
- Our NEW book opening library, increased to 64,000 positions.
- Computer linkup capability allows users to link the RS232 interface built into the Elite to a personal computer for additional analysis.
- 128K hash table size, which is twice the hash table memory of the original Mach III Master (Model 6098), resulting in a processing speed increase of 8%.



- New Chess Rating feature lets the Elite Avant Garde monitor your playing strength and give you a rating based upon your games against it.
- Built-in Book Builder enables you to create your very own custom opening book!
- Save a game to the Elite's Permanent Memory, and recall it at any time for replay or further study.
- The new Elite Avant Garde has the ability to learn from its mistakes, a feature never before seen in a commercial chess computer. The Elite's remarkable Permanent Learning Memory will not allow it to make the same mistake twice!



Model 6117

## M E N U

Model 6114



### Customized Versions of the Elite Avant Garde

**VERSION 2, IT LEARNS!:** Certified rating of 2265. Hash table memory is twice the size of the original Mach III Master (Model 6098). Additional new feature gives the computer the ability to actually learn from its mistakes.

**VERSION 6, CERTIFIED RATING OF 2325!:** The absolutely highest rating ever awarded a commercial product in tournament play against rated human players in 48 games. This model Elite uses a 68020 processor running at 20 megahertz – the same hardware used to achieve the 2325 rating. Due to the certified 2325 rating, this unit *requires* a minimum hash table size of 512K, or 64K positions.

**VERSION 10, THE BEST!:** Our biggest engine – 68040 MICROPROCESSOR. Own a chess computer that uses the same microprocessor sought after by the world's most high-tech companies.

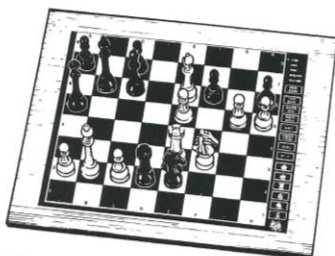
CUSTOM ELITE VERSION NUMBER	2	6	10
RAM Size (Hash Table Positions)	128K (16K)	512K (64K)	1024K (128K)
Processor Megahertz Speed	16	20	25
Processor Type (Quantity)	68000 (1)	68020 (1)	68040 (1)
Learning Feature	Yes	Yes	Yes

Dimensions: 19 X 18 X 1.5 in.

## OTHER WOOD STYLE UNITS AVAILABLE:

### GENESIS

The elegant look of walnut with storage pouch for chess pieces and memory-save feature. Uses 4 "AA" batteries (not included). Dimensions: 11.75 X 12.6 X 9 in.



Model 6108

### EL DORADO

Full-size board, cherry wood look. Elegant on any end-table. For beginner to "occasional" players. Uses 4 "AAA" batteries (not included). Dimensions: 9.3 X 10.25 X .9 in.

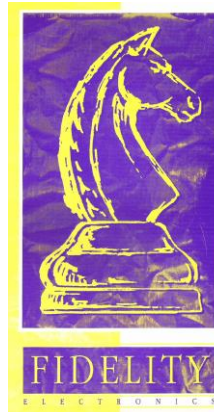


Model 6119

# Fidelity Product Brochure 1992

(Source: Fidelity Electronics International – Miami Florida USA - 1992) (photo copyright © by <http://www.schaakcomputers.nl/>) (600 dpi)

# FIDELITY



## Fidelity Chess Reference Chart

Model Number	6115	6096	6116	6119	6118	6108	6111	6121	6125	6102	6120	6106	6126	6122	6113	6129	
MODEL NAME	CHESS CARD	MICRO CHESS	CHESS PAL	EL DORADO	TINY CHESS	GENESIS	CHESS COACH	MARAUDER	LITTLE CHESSTER	DESIGNER 2000	CHESSTER	DESIGNER 2100 DISPLAY	CHESSTER PHANTOM	TRAVEL MASTER	MASTER 2255	MASTER 2325	
Chess Strength Rating	Estimated 1100	Estimated 1100	Estimated 1200	Estimated 1350	Estimated 1500	Estimated 1500	Estimated 1500	Estimated 1650	Estimated 1900	Estimated 2000	Certified 2100	Certified 2100	Certified 2100	Estimated 2125	Certified 2265	Certified 2325	
Microprocessor	45C	45C	45C	80C49	M50743	6301	80C50	M50743	6502	6502	6502	6502	6502	H8	68000	68020	
Speed (Megahertz)	0.50	0.6	0.6	6	8	1.8	6	8	2	3	3	6	5	10	16	20	
Levels	64	64	64	8	32	16	8	32	33	12	25	33	33	64	33	33	
ROM/RAM (Bytes)	2K/64	2K/64	2K/64	2K/128	4K/256	4K/128	4K/256	4K/256	128K/2K	32K/8K	160K/8K	64K/8K	64K/8K	16K/5K	64K/80K	64K/544K	
Board LED's	---	---	---	16	---	16	16	16	16	16	16	16	---	---	16	16	
Display Window	Yes	Yes	Yes	---	Yes	---	---	---	---	---	---	Yes	Yes	Yes	Yes	Yes	
Input System	Keyboard	Keyboard	Keyboard	Sensory	Sensory	Sensory	Sensory	Sensory	Sensory	Sensory	Sensory	Sensory	Sensory	Sensory	Sensory	Sensory	
Book Openings	---	---	---	100	---	300	100	100	12,000	12,000	12,000	28,000	28,000	3,000	28,000	28,000	
Take Back Moves	---	---	---	---	2	4	2	2	64	256	200	256	256	34	256	256	
Thinks On Opponent's Time	---	---	---	---	---	Yes	Yes	---	Yes	Yes	Yes	Yes	Yes	Yes	Yes	Yes	
Deluxe Display Features	---	---	---	---	---	---	---	---	---	---	---	Yes	Yes	Yes	Yes	Yes	
Memory Save	Yes	Yes	Yes	---	Yes	Yes	---	Yes	Yes	---	---	---	---	Yes	---	---	
Transformer	---	---	---	Optional	---	Optional	Optional	Optional	Optional	Optional	Optional	Optional	Required	Optional	Optional	Required	
Battery Information	1x3V	3 x AAA	4 x AA	4 x AAA	4 x AAA	4 x AA	4 x AA	4 x AA	4 x AAA	4 x AA	4 x AA	4 x AA	---	4 x AAA	4 x AA	4 x AA	
Maximum Battery Life Hours	65	500	500	100	100	100	100	100	30	75	40	40	---	200	15	---	
Chess Board Size (Centimeters)	3.5x3.5 (8.9x8.9)	4.25x4.25 (10.8x10.8)	9.2x9.2 (23.3x23.3)	8 x 8 (20 x 20)	3 x 3 (7.6 x 7.6)	9.25x9.25 (23.5x23.5)	8x8 (20 x 20)	7 x 7 (18 x 18)	8 x 8 (20 x 20)	8 x 8 (20 x 20)	8 x 8 (20 x 20)	8 x 8 (20 x 20)	8 x 8 (20 x 20)	10 x 10 (25 x 25)	4 x 4 (10.4x10.4)	8 x 8 (20 x 20)	8 x 8 (20 x 20)
Overall Size (Centimeters)	3.7x2.3x.24 (9.5x5.8x.6)	4.8x2.6x1 (12x6.6x2.5)	10.6x9.6x.95 (27x24.6x2.4)	9.3x10.25x.9 (23.5x26x2.3)	4x6.25x1 (10x16x2.5)	11.75x12.6x.8 (30x32x2.3)	12x12x.9 (30.8x30.8x2.3)	9x11.4x1 (23x29x2.7)	9.3x10.25x.9 (23.5x26x2.3)	12x12x.9 (30.8x30.8x2.3)	12x12x.9 (30.8x30.8x2.3)	12x12x.9 (30.8x30.8x2.3)	22.3x18.6x3.6 (56.6x47x9)	6.5x3x.9 (17.2x14.6x2.4)	12x12x.9 (30.8x30.8x2.3)	12x12x.9 (30.8x30.8x2.3)	

## Fidelity Product Brochure 1992

**NB: Little Chesster with 33 levels = model 1991 (with 25 levels = model 1992)**

(Source: Fidelity Electronics International – Miami Florida USA - 1992) (photo copyright © by <http://www.schaakcomputers.nl/>) (600 dpi)